

## Anti - p38- $\delta$ (MAPK13) – rabbit clonal antibody

Cat. #: DB 164-0.05 (50  $\mu$ l)  
DB 164-0.1 (100  $\mu$ l)

Clone number: I14-L  
Uniprot: Human: O15264; Mouse: Q9Z1B7; Rat: Q9WTY9

**Product description:** Rabbit anti-p38- $\delta$  immunoaffinity purified clonal IgGs

**Immunogen:** Peptide derived from the C-terminus of human p38- $\delta$  sequence

**Species Reactivity:** Human, mouse, rat - tested

**Basic information:** Major clone of IgGs obtained from immunoaffinity purified immunoglobulins corresponding to immunogenic peptide

**Buffer:** 20 mM Tris-HCl, pH 8.0

**Stabilizer:** 10 mg/ml BSA

**Preservative:** 0.05% Sodium Azide

**Storage:** 10  $\mu$ l aliquots at -20° C.

**Handling:** Avoid repeated freezing and thawing

**Expiration:** 24 months (from the date of delivery)

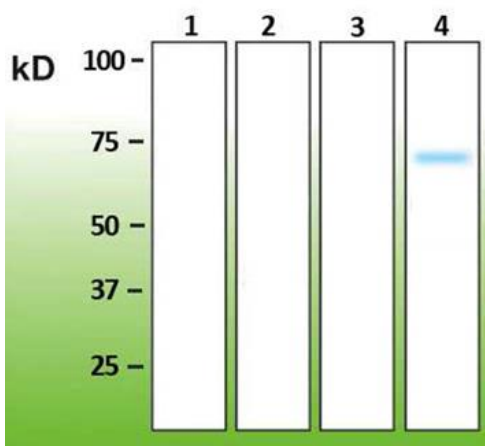
**Applications:** Western blot, Immunoprecipitation, ELISA, [Immunocytochemistry \(ICC\)](#)

**Dilution range:** **Western blotting – 1:1,000. ELISA – 1:10,000-1:20,000. Immunoprecipitation, immunohistochemistry – to be tested by user.**

### Western immunoblotting solutions:

- Wash buffer: 1x Tris Buffered Saline (TBS); 0.1% Triton X-100
- Blocking buffer: 1xTBS; 0.1% Triton X-100; 5% nonfat dry milk

**For western blots,** incubate the membrane with antibody diluted in blocking buffer for 2 hours at room temperature.



### Anti - p38- $\delta$ (DB 164)

Western blot analysis of p38- $\delta$ . Lane A – human recombinant p38- $\alpha$  (260-360a.a., N-terminal GST tag; Novus Biologicals, cat. #: H00001432-Q01), lane B – human recombinant p38- $\beta$  (with C-terminal DDK tag, Novus Biologicals, cat. #: NBL1-12870), lane C - human recombinant PKC- $\gamma$  (1-368a.a., N-terminal GST tag, Novus Biologicals, cat. #: H00006300-P01), lane D – human recombinant p38- $\delta$  (1-366a.a., N-terminal GST tag, Novus Biologicals, cat. #: H00005603-P01). 500ng of recombinant protein was loaded in each well.