

Anti - p38- γ (MAPK12) – rabbit clonal antibody

Cat. #: DB 163-0.05 (50 μ l)
DB 163-0.1 (100 μ l)

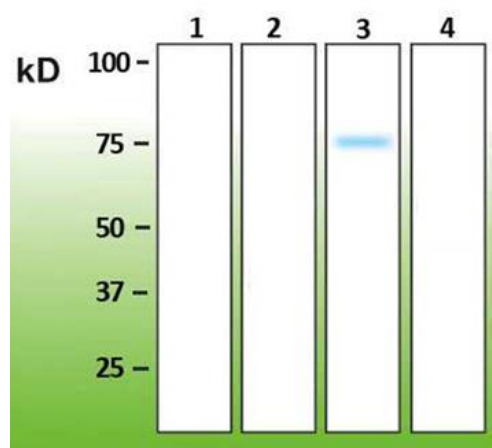
Clone number: R13-L
Uniprot: Human: P53778, Mouse: O08911, Rat: Q63538

Product description: Rabbit anti-p38- γ immunoaffinity purified clonal IgGs
Immunogen: Peptide derived from the C-terminus of human p38- γ sequence
Species Reactivity: Human, mouse, rat - tested
Basic information: Major clone of IgGs obtained from immunoaffinity purified immunoglobulins corresponding to immunogenic peptide
Buffer: 20 mM Tris-HCl, pH 8.0
Stabilizer: 10 mg/ml BSA
Preservative: 0.05% Sodium Azide
Storage: 10 μ l aliquots at -20° C.
Handling: Avoid repeated freezing and thawing
Expiration: 24 months (from the date of delivery)
Applications: Western blot, Immunoprecipitation, ELISA, [Immunocytochemistry \(ICC\)](#)
Dilution range: **Western blotting – 1:1,000. ELISA – 1:10,000-1:20,000. Immunoprecipitation, immunohistochemistry – to be tested by user.**

Western immunoblotting solutions:

- Wash buffer: 1x Tris Buffered Saline (TBS); 0.1% Triton X-100
- Blocking buffer: 1xTBS; 0.1% Triton X-100; 5% nonfat dry milk

For western blots, incubate the membrane with antibody diluted in blocking buffer for 2 hours at room temperature.



Anti - p38- γ (DB 163)

Western blot analysis of p38- γ . Lane A – human recombinant p38- α (260-360a.a., N-terminal GST tag; Novus Biologicals, cat. #: H00001432-Q01), lane B – human recombinant p38- β (with C-terminal DDK tag, Novus Biologicals, cat. #: NBL1-12870), lane C – human recombinant PKC- γ (1-368a.a., N-terminal GST tag, Novus Biologicals, cat. #: H00006300-P01), lane D – human recombinant p38- δ (1-366a.a., N-terminal GST tag, Novus Biologicals, cat. #: H00005603-P01). 500ng of recombinant protein was loaded in each well.