

## Anti-D Tag (Mouse Monoclonal) Antibody Cat. No. G191

Quantity 100ug

Tested Applications  
WB, IS and IP

Antibody Type Tag Antibody

Immunogen A synthetic peptide (DYKDDDDK) coupled to KLH.

Specificity Anti-D tag Antibody recognises over-expressed proteins containing D epitope tag fused to either amino- or carboxy-termini of targeted proteins in transfected mammalian cells.

Tested Applications  
WB, IS and IP

Application Notes Optimal working dilutions should be determined experimentally by the investigator. Prepare working dilution immediately before use. Suggested starting dilutions are as follows: Western Blot at dilutions of 1:100. Immunoprecipitation and immunostaining at dilutions of 1:20.

Raised In Mouse

Clonality F-tag-01

Isotype IgG2b with lambda light chain

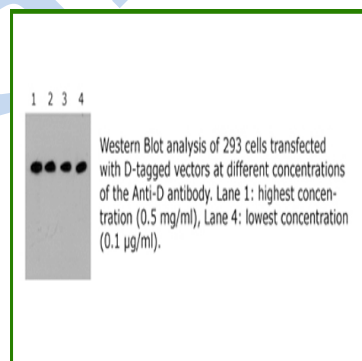
Storage Buffer PBS, pH 7.4 with 0.05% sodium azide.

Formulation Liquid

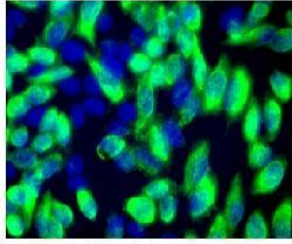
Concentration 100ug/100uL

Storage Stable for 1 year at -20°C from date of shipment. For maximum recovery of product, centrifuge the original vial after thawing and prior to opening the cap. Aliquot to avoid repeated freezing and thawing. Aliquot will be stable at 4°C for 3 months.

### Pictures



## Pictures



HeLa cells transiently transfected with myc-DDK tagged GFAP ORF cDNA clone and immunostained with Anti-D-Tag antibody (G191) (1:1,000 dilution), and then colored in green with Alexa-488 conjugated secondary antibody (1:2,000). The nuclei (Blue) were counter-stained with DAPI.

GENTAUR